



Chill with Elan

**Frozen & Chilled
Food Solution**

2018

About Elanpro

- ❖ **Elan Professional Appliances (ELANPRO) is a young company founded by professionals who have a combined experience of over 80 years in the Indian Refrigeration & Food Service industry. They bring rich entrepreneurial experience of having setup and run a company successfully and built highly respected brands along with a good mix of corporate exposure at the highest level.**
- ❖ **We offer international range of refrigeration products and food-service solutions known for its quality for hotels, restaurants, bars, coffee shops and segments like Food, beverage & ice cream & modern retail and the healthcare.**

Our Strength

Enduring Alliances: Enjoys enduring alliances with globally renowned brands like Vin Service and SPM of Italy. Our products have global leadership in their segment and offer innovative solutions for Beverage and Frozen Beverage dispensing.

National Footprint: Has pan-India distribution network (branches, satellite offices and 260 channel partners) across 29 Indian states/Union Territories. Strong presence in relatively emerging states in the upcountry with a growing market.

Thriving Relationships: Strong distribution network through 260 dealers in 2017. Relationship dating back to 2009.

Brand: Successful proprietary brand (Elanpro) a synonym for Quality Commercial Refrigeration and Beverage products.

International Quality: Markets products of dependable quality (outsourced and proprietary).

Consistent Growth: Topline has grown at a CAGR of 30% over 8 years, beating the industry average, enhancing banker and vendor confidence.

Inventory Management: Robust inventory management implying an easy availability of fast moving products.

Data Backbone: Intelligent Software system backbone with online connectivity to provide real-time information for faster decision-making.

OUR FOCUS SEGMENTS



Bar Refrigeration



Medical Refrigeration



Professional Kitchen



Showcase Display



Retail Refrigeration



Beverage Dispenser

Some of Our Customers

Amul

Arun®
ICECREAMS



Bisleri.



Coca-Cola



Upright Chiller

Key Features

- ❖ Adjustable powder coated wire shelves
- ❖ Double panel tempered glass door with Plastic frame
- ❖ Exterior material: Powder Coated
- ❖ Interior liner: Plastic
- ❖ Adjustable legs
- ❖ Inside fan for air circulation
- ❖ Internal Light



Model:	ECG 105
Description:	Upright Chiller
Capacity:	105 Ltrs.
Temperature Range: °C	2°C~8°C
No. of 330ml cans:	NA
Exterior Dimension's: W x D x H (Inch)	19x21x32

Upright Chiller

Key Features

- ❖ Adjustable powder coated wire shelves
- ❖ Double panel tempered glass door with Plastic frame
- ❖ Exterior material: Powder Coated
- ❖ Interior liner: Plastic
- ❖ Adjustable legs
- ❖ Inside fan for air circulation
- ❖ Vertical LED Light inside



Model:	ECG 205
Description:	Upright Chiller
Capacity:	200 Ltrs.
Temperature Range: °C	2°C~10°C
Exterior Dimension's: W x D x H (Inch)	20 X 23 X 54
Castors:	YES (Rear)
No. of Baskits/Shelves:	3

Upright Chiller

Key Features

- ❖ Adjustable powder coated wire shelves
- ❖ Double panel tempered glass door with Plastic frame
- ❖ Exterior material: Powder Coated
- ❖ Interior liner: Plastic
- ❖ Adjustable legs
- ❖ Inside fan for air circulation
- ❖ Vertical LED Light inside



Model:	ECG 305
Description:	Upright Chiller
Capacity:	300 Ltrs.
Temperature Range: °C	2°C~10°C
Exterior Dimension's: W x D x H (Inch)	23 x 25 x 66
Castors:	YES (Rear)
No. of Baskits/Shelves:	4

Upright Chiller

Key Features

- ❖ Adjustable powder coated wire shelves
- ❖ Double panel tempered glass door with Plastic frame
- ❖ Exterior material: Powder Coated
- ❖ Interior liner: Plastic
- ❖ Adjustable legs
- ❖ Inside fan for air circulation
- ❖ Vertical LED Light inside



Model:	ECG 405
Description:	Upright Chiller
Capacity:	400 Ltrs.
Temperature Range: °C	2°C~10°C
Exterior Dimension's: W x D x H (Inch)	26 x 25 x 76
Castors:	YES (Rear)
No. of Baskits/Shelves:	4

Upright Chiller

Key Features

- ❖ Adjustable powder coated wire shelves
- ❖ Double panel tempered glass door with Plastic frame
- ❖ Exterior material: Powder Coated
- ❖ Interior liner: Aluminum
- ❖ Adjustable legs
- ❖ Inside fan for air circulation
- ❖ Two Vertical LED Light inside



Model:	ECG 625
Description:	Upright Chiller
Capacity:	625 Ltrs.
Temperature Range: °C	2°C~10°C
Exterior Dimension's: W x D x H (Inch)	36 x 29 x 85
Castors:	YES
No. of Baskits/Shelves:	3

Upright Chiller

Key Features

- ❖ Frost Free machine
- ❖ Tempered Glass Door
- ❖ Low Power consumption
- ❖ Double Pane glass door
- ❖ Danfoss Compressor
- ❖ Heavy Duty Castors for easy movement
- ❖ Painted glass door frame.
- ❖ Lock
- ❖ Double Vertical LED Light inside



Model:	ECG 1100
Description:	Upright Chiller
Capacity:	1100 Ltrs.
Temperature Range: °C	2°C~ 10°C
Exterior Dimension's: W x D x H (Inch)	48 x 28 x 78
Castors:	YES
No. of Baskits/Shelves:	5

Upright Chiller

Key Features

- ❖ Frost Free machine
- ❖ Tempered Glass Door
- ❖ Low Power consumption
- ❖ Double Pane glass door
- ❖ Danfoss Compressor
- ❖ Heavy Duty Castors for easy movement
- ❖ Painted glass door frame.
- ❖ Lock
- ❖ Double Vertical LED Light inside



Model:	ECG 1500
Description:	Upright Chiller
Capacity:	1500 Ltrs.
Temperature Range: °C	2°C~ 10°C
Exterior Dimension's: W x D x H (Inch)	81 x 28 x 78
Castors:	YES
No. of Baskits/Shelves:	5

Upright Freezer

Key Features

- ❖ Frost Free machine
- ❖ Heated Glass Door
- ❖ Low Power consumption
- ❖ Triple Pane glass door
- ❖ Danfoss Compressor
- ❖ Digital Controller and Display
- ❖ Heavy Duty Castors for easy movement
- ❖ Aluminum glass door frame.
- ❖ Lock
- ❖ Vertical LED Light inside



Model:	EFGV 400
Description:	Upright Freezer
Capacity:	400 Ltrs.
Temperature Range: °C	-16°C~-24°C
Exterior Dimension's: W x D x H (Inch)	26 x 26 x 87
Castors:	YES
No. of Baskits/Shelves:	5 (Adjustable)

Upright Freezer

Key Features

- ❖ Frost Free machine
- ❖ Heated Glass Door
- ❖ Low Power consumption
- ❖ Triple Pane glass door
- ❖ Danfoss Compressor
- ❖ Digital Controller and Display
- ❖ Heavy Duty Castors for easy movement
- ❖ Aluminum glass door frame.
- ❖ Lock
- ❖ Vertical LED Light inside



Model:	EFGV 450
Description:	Upright Freezer
Capacity:	450 Ltrs.
Temperature Range: °C	-16°C~-24°C
Exterior Dimension's: W x D x H (Inch)	27 x 28 x 78
Castors:	YES
No. of Baskits/Shelves:	5 (Adjustable)

Upright Freezer

Key Features

- ❖ Frost Free machine
- ❖ Heated Glass Door
- ❖ Low Power consumption
- ❖ Triple Pane glass door
- ❖ Danfoss Compressor
- ❖ Digital Controller and Display
- ❖ Heavy Duty Castors for easy movement
- ❖ Aluminum glass door frame.
- ❖ Lock
- ❖ Double Vertical LED Light inside



Model:	EFGV 1000
Description:	Upright Freezer
Capacity:	950 Ltrs.
Temperature Range: °C	-16°C--24°C
Exterior Dimension's: W x D x H (Inch)	54 x 28 x 78
Castors:	YES
No. of Baskits/Shelves:	5

Upright Freezer

Key Features

- ❖ Frost Free machine
- ❖ Heated Glass Door
- ❖ Low Power consumption
- ❖ Triple Pane glass door
- ❖ Danfoss Compressor
- ❖ Digital Controller and Display
- ❖ Heavy Duty Castors for easy movement
- ❖ Aluminum glass door frame.
- ❖ Lock
- ❖ Triple Vertical LED Light inside



Model:	EFGV 1500
Description:	Upright Freezer
Capacity:	1500 Ltrs.
Temperature Range: °C	-16°C~-24°C
Exterior Dimension's: W x D x H (Inch)	81 x 28 x 78
Castors:	YES
No. of Baskits/Shelves:	5

Hard Top Chest Freezer

Key Features

- ❖ Corrosion-resistant body made of pre-coated sheet
- ❖ Lock
- ❖ High density PUF insulation for better holding time
- ❖ Highly energy-efficient compressor
- ❖ Dual tone color
- ❖ Recessed handle
- ❖ Heavy duty castors
- ❖ Dual Temperature Unit to convert freezer to chiller



Model:	EF 105
Description:	Hard Top Chest Freezer cum Cooler
Capacity:	100 Ltrs.
Temperature Range: °C	8°C~-25°C
Exterior Dimension's: W x D x H (Inch)	22 x 23 x 33
Castors:	YES
No. of Baskits/Shelves:	1

Hard Top Chest Freezer

Key Features

- ❖ Corrosion-resistant body made of pre-coated sheet
- ❖ Lock
- ❖ High density PUF insulation for better holding time
- ❖ Highly energy-efficient compressor
- ❖ Dual tone color
- ❖ Handle with lock
- ❖ Heavy duty castors
- ❖ Dual Temperature Unit to convert freezer to chiller



Model:	EF 215
Description:	Hard Top Chest Freezer cum Cooler
Capacity:	215 Ltrs.
Temperature Range: °C	8°C~-25°C
Exterior Dimension's: W x D x H (Inch)	30 x 29 x 33
Castors:	YES
No. of Baskits/Shelves:	2

Hard Top Chest Freezer

Key Features

- ❖ Corrosion-resistant body made of pre-coated sheet
- ❖ Lock
- ❖ High density PUF insulation for better holding time
- ❖ Highly energy-efficient compressor
- ❖ Dual tone color
- ❖ Handle with lock
- ❖ Heavy duty castors
- ❖ Dual Temperature Unit to convert freezer to chiller



Model:	EF 305
Description:	Hard Top Chest Freezer cum Cooler
Capacity:	300 Ltrs.
Temperature Range: °C	8°C~-25°C
Exterior Dimension's: W x D x H (Inch)	44 x 24 x 33
Castors:	YES
No. of Baskits/Shelves:	2

Hard Top Chest Freezer

Key Features

- ❖ Corrosion-resistant body made of pre-coated sheet
- ❖ Lock
- ❖ High density PUF insulation for better holding time
- ❖ Highly energy-efficient compressor
- ❖ Dual tone color
- ❖ Handle with lock
- ❖ Heavy duty castors
- ❖ Dual Temperature Unit to convert freezer to chiller
- ❖ Double Door



Model:	EF 455
Description:	Hard Top Chest Freezer cum Cooler
Capacity:	410 Ltrs.
Temperature Range: °C	8°C--25°C
Exterior Dimension's: W x D x H (Inch)	49 x 30 x 36
Castors:	YES
No. of Baskits/Shelves:	2

Hard Top Chest Freezer

Key Features

- ❖ Corrosion-resistant body made of pre-coated sheet
- ❖ Lock
- ❖ High density PUF insulation for better holding time
- ❖ Highly energy-efficient compressor
- ❖ Dual tone color
- ❖ Handle with lock
- ❖ Heavy duty castors
- ❖ Dual Temperature Unit to convert freezer to chiller
- ❖ Double Door



Model:	EF 555
Description:	Hard Top Chest Freezer cum Cooler
Capacity:	520 Ltrs.
Temperature Range: °C	8°C--25°C
Exterior Dimension's: W x D x H (Inch)	65 x 28 x 33
Castors:	YES
No. of Baskits/Shelves:	2

Hard Top Chest Freezer

Key Features

- ❖ Corrosion-resistant body made of pre-coated sheet
- ❖ Lock
- ❖ High density PUF insulation for better holding time
- ❖ Highly energy-efficient compressor
- ❖ Dual tone color
- ❖ Handle with lock
- ❖ Heavy duty castors
- ❖ Dual Temperature Unit to convert freezer to chiller
- ❖ Triple Door



Model:	EF 825
Description:	Hard Top Chest Freezer cum Cooler
Capacity:	818 Ltrs.
Temperature Range: °C	8°C~-25°C
Exterior Dimension's: W x D x H (Inch)	95 x 29 x 33
Castors:	YES
No. of Baskits/Shelves:	3

Hard Top Chest Freezer

Key Features

- ❖ Corrosion-resistant body made of pre-coated sheet
- ❖ Lock
- ❖ High density PUF insulation for better holding time
- ❖ Highly energy-efficient compressor
- ❖ Dual tone color
- ❖ Handle with lock
- ❖ Heavy duty castors
- ❖ Dual cabinet for Freezer and Chiller



Model:	EF 405 Combi
Description:	Hard Top Chest Freezer cum Cooler
Capacity:	400 Ltrs.
Temperature Range: °C	8°C~-25°C
Exterior Dimension's: W x D x H (Inch)	52 x 27 x 39
Castors:	YES
No. of Baskits/Shelves:	2

Hard Top Chest Freezer

Key Features

- ❖ Pre painted GI sheet interior for strength
- ❖ Low E Glass
- ❖ High performing cooling system for -24°C temperature
- ❖ Tropicalized
- ❖ Efficient and powerful cooling
- ❖ Heavy duty Castors
- ❖ Lock
- ❖ Internal Light



Model:	EKG 155 D
Description:	Curve Glass Top Freezer
Capacity:	150 Ltrs.
Temperature Range: °C	-18°C~-24°C
Exterior Dimension's: W x D x H (Inch)	23 x 28 x 34
No. of Baskits/Shelves:	2

Hard Top Chest Freezer

Key Features

- ❖ Pre painted GI sheet interior for strength
- ❖ Low E Glass
- ❖ High performing cooling system for -24°C temperature
- ❖ Tropicalized
- ❖ Efficient and powerful cooling
- ❖ Heavy Duty Castors
- ❖ 70mm Insulation
- ❖ Superior Aesthetics



Model:	EKG 215 D
Description:	Curve Glass Top Freezer
Capacity:	300 Ltrs.
Temperature Range: °C	-16°C~-24°C
Exterior Dimension's: W x D x H (Inch)	30 x 26 x 36
No. of Baskits/Shelves:	2

Curve Glass Top Freezer-Super Saver

Key Features

- ❖ Pre painted GI sheet interior for strength
- ❖ Low E Glass
- ❖ High performing cooling system for -24°C temperature
- ❖ Tropicalized
- ❖ Efficient and powerful cooling
- ❖ Heavy Duty Castors
- ❖ 82mm Insulation
- ❖ Superior Aesthetics



Model:	EKG 315 D
Description:	Curve Glass Top Freezer (Super Saver)
Capacity:	300 Ltrs.
Temperature Range: °C	-16°C~-24°C
Exterior Dimension's: W x D x H (Inch)	41 x 27 x 34
No. of Baskits/Shelves:	4

Curve Glass Top Freezer-Super Saver

Key Features

- ❖ Pre painted GI sheet interior for strength
- ❖ Low E Glass
- ❖ High performing cooling system for -24°C temperature
- ❖ Tropicalized
- ❖ Efficient and powerful cooling
- ❖ Heavy duty Castors
- ❖ 82mm Insulation
- ❖ Superior Aesthetics



Model:	EKG 415
Description:	Curve Glass Top Freezer (Super Saver)
Capacity:	400 Ltrs.
Temperature Range: °C	-16°C~-24°C
Exterior Dimension's: W x D x H (Inch)	48 x 27 x 34
No. of Baskits/Shelves:	5

Chest Showcase

Key Features

- ❖ Pre painted GI sheet interior for strength
- ❖ Low E Glass
- ❖ High performing cooling system for -24°C temperature
- ❖ Tropicalized
- ❖ Efficient and powerful cooling
- ❖ Castors
- ❖ 70mm Insulation
- ❖ Superior Aesthetics
- ❖ Optional: Canopy



Model:	EKG 250 D
Description:	Chest Showcase
Capacity:	250 Ltrs.
Temperature Range: °C	-18°C~-24°C
Exterior Dimension's: W x D x H (Inch)	32 x 27 x 34
No. of Baskits/Shelves:	3

Chest Showcase

Key Features

- ❖ Pre painted GI sheet interior for strength
- ❖ Low E Glass
- ❖ High performing cooling system for -24°C temperature
- ❖ Tropicalized
- ❖ Efficient and powerful cooling
- ❖ Castors
- ❖ 70mm Insulation
- ❖ Superior Aesthetics
- ❖ Optional: Canopy



Model:	EKG 310 D
Description:	Chest Showcase
Capacity:	310 Ltrs.
Temperature Range: °C	-18°C--24°C
Exterior Dimension's: W x D x H (Inch)	40 x 26 x 34
No. of Baskits/Shelves:	4

Chest Showcase

Key Features

- ❖ Pre painted GI sheet interior for strength
- ❖ Low E Glass
- ❖ High performing cooling system for -24°C temperature
- ❖ Tropicalized
- ❖ Efficient and powerful cooling
- ❖ Castors
- ❖ 70mm Insulation
- ❖ Superior Aesthetics
- ❖ Optional: Canopy



Model:

EKG 410 D

Description:

Flat Glass Top Freezer

Capacity:

410 Ltrs.

Temperature Range: °C

-18°C~-24°C

Exterior Dimension's: W x D x H (Inch)

40 x 26 x 34

Chest Showcase

Key Features

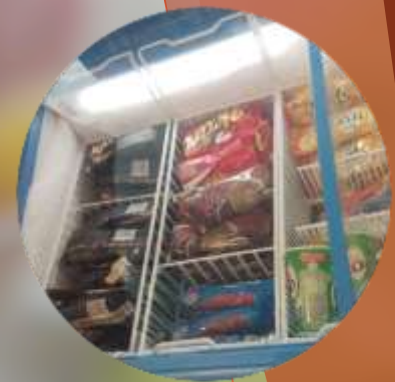
- ❖ Pre painted GI sheet interior for strength
- ❖ Low E Glass
- ❖ High performing cooling system for -30°C temperature
- ❖ Tropicalized
- ❖ Efficient and powerful cooling
- ❖ Castors
- ❖ 70mm Insulation
- ❖ Superior Aesthetics
- ❖ Optional: Canopy



Model:	EKG 625D
Description:	Curve Glass Top Freezer (Super Saver)
Capacity:	625 Ltrs.
Temperature Range: °C	-18°C~-24°C
Exterior Dimension's: W x D x H (Inch)	71 x 27 x 36



QDI BASKET



LED INSIDE

Optional



BACK CANOPY



SCOOPING CANOPY

Flat Glass Top Freezer

Key Features

- ❖ Pre painted GI sheet for aesthetic look
- ❖ Tempered Glass
- ❖ High performing cooling system for -24°C temperature
- ❖ Tropicalized
- ❖ Efficient and powerful cooling
- ❖ Heavy duty Castors



Model:	EKG 205A
Description:	Flat Glass Top Freezer
Capacity:	205 Ltrs.
Temperature Range: °C	-16°C~-24°C
Exterior Dimension's: W x D x H (Inch)	35 x 22 x 33
No. of Baskits/Shelves:	3

Chest Showcase

Key Features

- ❖ Pre painted GI sheet for aesthetic look
- ❖ Tempered Glass
- ❖ High performing cooling system for -24°C temperature
- ❖ Tropicalized
- ❖ Efficient and powerful cooling
- ❖ Heavy duty Castors



Model:	EKG 305A
Description:	Chest Showcase
Capacity:	305 Ltrs.
Temperature Range: °C	-18°C~-24°C
Exterior Dimension's: W x D x H (Inch)	42 x 24 x 33
No. of Baskits/Shelves:	4

Flat Glass Top Freezer

Key Features

- ❖ Pre painted GI sheet for aesthetic look
- ❖ Tempered Glass
- ❖ High performing cooling system for -24°C temperature
- ❖ Tropicalized
- ❖ Efficient and powerful cooling
- ❖ Heavy duty Castors



Model:	EKG 405A
Description:	Flat Glass Top Freezer
Capacity:	405 Ltrs.
Temperature Range: °C	-16°C~-24°C
Exterior Dimension's: W x D x H (Inch)	54 x 26 x 33
No. of Baskits/Shelves:	4

Flat Glass Top Freezer

Key Features

- ❖ Pre painted GI sheet for aesthetic look
- ❖ Tempered Glass
- ❖ High performing cooling system for -24°C temperature
- ❖ Tropicalized
- ❖ Efficient and powerful cooling
- ❖ Heavy duty Castors
- ❖ Embraco Compressor with R404a



Model:	EKG 650
Description:	Flat Glass Top Freezer
Capacity:	650 Ltrs.
Temperature Range: °C	-18°C~-24°C
Exterior Dimension's: W x D x H (Inch)	71 x 27 x 33

ICE PODS



Model:	SD 350	SD 450
Description:	POS Cooler	POS Cooler
Capacity:	15 x 33 x 48	48 x 31 x 48
Temperature Range: °C	280/254 Ltrs.	450/408 Ltrs.
Exterior Dimension's: W x D x H (Inch)	220-240V/50Hz	220-240V/50Hz
No. of Baskits/Shelves:	R134a	R134a

Island Showcase

Key Features

- ❖ Supermarket Plug in Island.
- ❖ Efficient and powerful cooling.
- ❖ No. of Doors/Type : 2/Glass.
- ❖ Dual Temperature Unit for convert freezer to chiller



Model:	EIL 45
Description:	Island Showcase
Capacity:	399 Ltrs.
Temperature Range: °C	+8°C--24°C
Exterior Dimension's: W x D x H (Inch)	63 x 28 x 35
No. of Baskits/Shelves:	4x2

Island Showcase

Key Features

- ❖ Supermarket Plug in Island.
- ❖ Efficient and powerful cooling.
- ❖ No. of Doors/Type : 2/Glass.
- ❖ Dual Compressor
- ❖ Dual Temperature Unit for convert freezer to chiller



Model:	EIL 65
Description:	Island Showcase
Capacity:	660 Ltrs.
Temperature Range: °C	+8°C~-24°C
Exterior Dimension's: W x D x H (Inch)	67 x 36 x 35
No. of Baskits/Shelves:	4x3

FACILITY

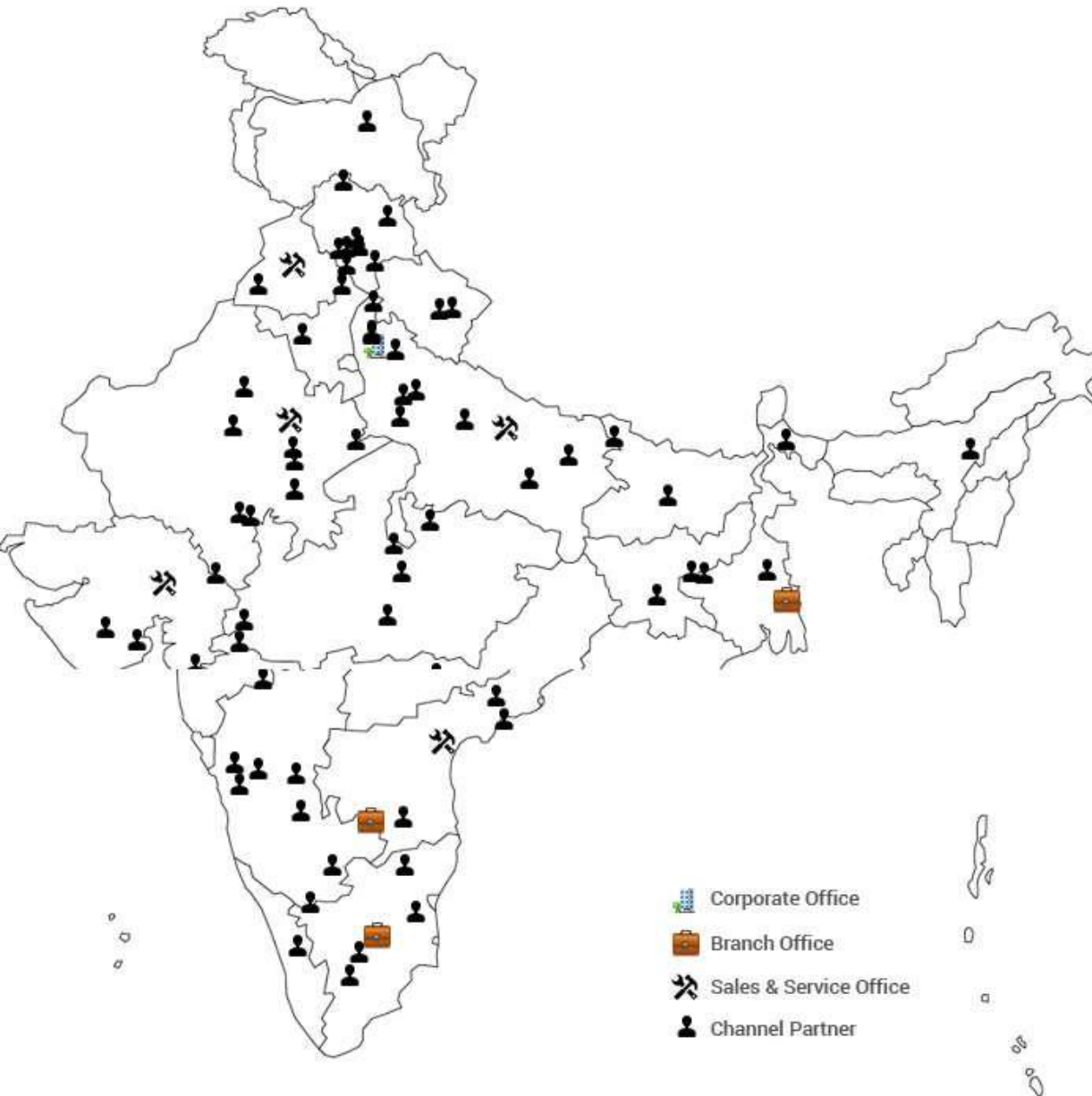
- 1. We provide warranty extension to our customers for better service & good relations with customers.**
- 2. Our service Team is available across India & is focused to provide quality service**



Presence and Channel Partners

The company has a nationwide presence with branch and satellite offices along with warehouses across all states and Union Territories with over 60 employees.

The company has extended its presence beyond metro cities to B,C and D class towns with a significant and growing presence in the upcountry hinterlands.



THANK YOU



Chill with Elan